

**GUILFORD HIGH SCHOOL
EXTERIOR LIGHTING
CHANGES
GUILFORD, CONNECTICUT
STATE PROJECT #060-0010 N**

ADDENDUM NO. 1

I. REVISIONS TO TECHNICAL SPECIFICATIONS

1. Specification Section 0265600 – Exterior Lighting
 - a. Append to the end of specification section the following documents noted in the Table of Contents:
 - a. Fixture Schedule.
 - b. Light fixture cuts.
 - c. FER 1 and 2 Post Light shield sketch.

II. ATTACHMENTS TO ADDENDUM

<u>Description</u>	<u>Pages</u>
Fixture Schedule	1
Light fixture cuts	6
FER 1 and 2 Post Light Shield sketch	1

END OF ADDENDUM NO. 1

PROJECT: GUILFORD HIGH SCHOOL - ENTRY + SITE LIGHTING UPGRADE

BID FIXTURE SCHEDULE

RIPMAN LIGHTING CONSULTANTS

BY: RLC JOB NUMBER: 16004.0 DATE: 3 October 2016

(617) 489-3366 FAX (617) 489-5223 EMAIL: chris@ripmanlighting.com

IN BIDDING OR ORDERING FIXTURES, LAMPS OR CONTROL EQUIPMENT, REFER TO FIXTURE SCHEDULE NOTES. INCLUDE ALL FIXTURES AND INSTALLATION IN BASE BID.

FIXT TYPE	GENERIC DESCRIPTION OF FIXTURE MANUFACTURER'S SPECIFICATION	(LOCATION)	LAMPING	LAMP WATTS	MOUNTING	NOTES, VOLTAGE
FER-1	EXISTING TALL LED POSTTOP TO REMAIN CREE (EXISTING 23" ROUND LED FULL CUTOFF FIXTURE ARM-MOUNTED TO 28' POLE) EC FURNISH AND INSTALL CUSTOM GLARE SHIELD TYPE GS-FER1 BY NEWSTAMP LIGHTING (OR EC)	(SITE PARKING)	LED	EXISTING	POST-TOP	SEE CUTS FOR CONCEPT SKETCH FOR PRICING. OPTICAL MATTE POWDERCOATED BLACK RING SHIELD, ATTACHED TO FIXTURE w/ 4 SS TEK SCREWS (BY EC).
FER-2	EXISTING SHORT LED POSTTOP TO REMAIN CREE (EXISTING 23" ROUND LED FULL CUTOFF FIXTURE SPIDER-MOUNTED TO 16' POLE) EC FURNISH AND INSTALL CUSTOM GLARE SHIELD TYPE GS-FER2 BY NEWSTAMP LIGHTING (OR EC)	(SITE PEDESTRIAN PATHS)	LED	EXISTING	POST-TOP	SEE CUTS FOR CONCEPT SKETCH FOR PRICING. OPTICAL MATTE POWDERCOATED BLACK RING SHIELD, ATTACHED TO FIXTURE w/ 4 SS TEK SCREWS (BY EC).
FER-3	EXISTING OPAL GLOBE LED JELLY JAR FIXTURE AS SPEC'D: H-LITE # H-CGU-F-96-FR-32CFL-0BB-M CLEAN FIXTURE, CONFIRM MFR + SPEC, REPLACE EXISTING GLOBE WITH CLEAR GLOBE TO MATCH	(TERRACE)	LED	EXISTING	SURFACE CEILING	
SW-1	DIRECT 2700K LED WALL-MTD FORWARD-THROW CAN LIGMAN "TANGO" # UTA - 31821 - 40 - FT/FT - W27 - 277 - F - 04 (RAL 9006)	(E + W COURTYARDS)	2700K LED	40	SURFACE WALL (EXISTING BOX)	MOUNTED TO J-BOX FOR EXISTING FIXTURE TYPE "AA". LOCATIONS ARE WET-LABEL. EC PROVIDE ANY HICKEYS OR PLATES REQ'D FOR MOUNTING. NATURAL ALUMINUM POWDERCOAT (RAL 9006). FROSTED LENS DOWN. PROVIDE SAMPLE COLOR CHIP FOR ARCHT'S APPROVAL.
						277v.
SW-2	DIRECT /INDIRECT LED WALL-MTD FORWARD THROW CAN LIGMAN "TANGO" # UTA - 31821 - 2x40 - FT/FT - W27 - 277 - C (UP) / F - 04 (RAL 9006)	(N COURTYARD)	2700K LED	80	SURFACE WALL (EXISTING BOX)	MOUNTED TO J-BOX FOR EXISTING FIXTURE TYPE "AA". LOCATIONS ARE WET-LABEL. EC PROVIDE ANY HICKEYS OR PLATES REQ'D FOR MOUNTING. NATURAL ALUMINUM POWDERCOAT (RAL 9006). FROSTED LENS DOWN. CLEAR DUST COVER UP.
						277v.

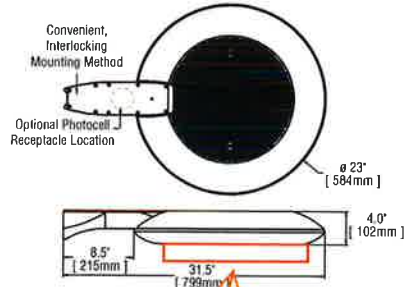
Submitted by Vanguard Lighting	Job Name: GUILFORD HIGH SCHOOL Architect: TAI SOO KIM ASSOCIATES (HARTFORD) Engineer: KOHLER RONAN (DANBURY)	Catalog Number: ARE-EDR-2M-DA-04-D-UL-BK-700-43K Notes:	Type: FF-28 V14-42936
--------------------------------	---	---	---

28' MH

ARE-EDR-2M-DA THE EDGE® LED Round Area Light – Type II Medium Rev. Date: 9/16/11



Notes:



Product	Family	Optic	Mounting	# of LEDs (x 10)	LED Series	Voltage	Color Options	Drive Current	Factory-Installed Options
ARE	EDR	2M ¹ 2MB ²	DA ³	04 ⁴ 06 ⁴	D	UL Universal 120-277V UH Universal 347-480V 34 347V	SV Silver BK Black BZ Bronze PB Platinum Bronze WH White	350 350mA 525 525mA 700 ⁶ 700mA	43K 4300K Color Temperature ⁶ DIM 0-10V Dimming ^{1,4} F Fuse ^{9,10,11} HL Hi/Low (175/350/525, dual circuit input) ¹² P Photocell ^{11,13} R NEMA Photocell Receptacle ^{11,14} ML Multi-Level (75/525) ¹²

EXISTING FIXTURE WITH ADDED SHEET METAL COLLAR TO CONTROL GLARE FOR NEIGHBORS. IF HEAD IS IDENTICAL EXCEPT FOR MOUNTING (SPIDER vs ARM) SHIELDS WILL BE IDENTICAL FOR TYPES FER-1 AND FER-2

ROLLED METAL COLLAR SHIELD PAINTED BLACK, 1.5" DEEP (SEE FER-2 FOR NOTES)

Footnotes

- IESNA Type II Medium distribution
- IESNA Type II Medium distribution with backlight control
- Direct mounting arm for use with 3-6" (76mm-152mm) square or round pole
- Consists of multiple 20 LED light bars. 40, 60, 80, and 100 LED units use blanks as needed in place of populated light bars
- Available on fixtures with 40-60 LEDs
- Color temperature per fixture; 6000K standard; minimum 70 CRI
- Control by others
- Refer to dimming spec sheet for availability and additional information.
- When code dictates fusing use time delay fuse
- Not available when UH voltage is selected
- Not available with all multi-level options. Refer to multi-level spec sheet for availability and additional information
- Refer to multi-level spec sheet for availability and additional information
- Must specify voltage other than UH
- Intended for horizontal mounting

# of LEDs	Initial Delivered Lumens – Type II Medium @ 6000K		Rating**		Initial Delivered Lumens – Type II Medium w/ Backlight Control @ 6000K		Rating**		Initial Delivered Lumens – Type II Medium @ 4300K		Rating**		Initial Delivered Lumens – Type II Medium w/ Backlight Control @ 4300K		Rating**		System Watts 120-277V	Total Current @ 120V	Total Current @ 240V	Total Current @ 277V	Total Current @ 347V	Total Current @ 480V	L ₇₀ Hours* @ 25° C (77° F)	50K Hours Lumen Maintenance Factor* @ 15° C (59° F)	
	B	U	G	B	U	G	B	U	G	B	U	G	B	U	G										
350mA Fixture Operating at 25° C (77° F)																									
40 ⁴	3,826 (04)	1	1	1	2,892 (04)	1	1	1	3,526 (04)	1	1	1	2,656 (04)	1	1	1	47	0.40	0.21	0.19	0.15	0.12	>150,000	93%	
60 ⁴	5,665 (06)	2	1	2	4,267 (06)	1	1	1	5,221 (06)	1	1	1	3,933 (06)	1	1	1	68	0.58	0.30	0.26	0.20	0.16	>150,000		
80 ⁴	7,554 (08)	2	2	2	5,680 (08)	1	2	1	6,962 (08)	2	2	2	5,244 (08)	1	2	1	90	0.77	0.38	0.34	0.26	0.20	>150,000		
100 ⁴	9,419 (10)	2	2	2	7,095 (10)	1	2	2	8,681 (10)	2	2	2	6,539 (10)	1	2	1	111	0.95	0.47	0.42	0.32	0.24	>150,000		
120 ⁴	11,302 (12)	3	2	3	8,513 (12)	1	2	2	10,417 (12)	2	2	2	7,846 (12)	1	2	2	132	1.15	0.56	0.50	0.38	0.28	>150,000		
525mA Fixture Operating at 25° C (77° F)																									
40 ⁴	5,357 (04)	2	1	2	4,035 (04)	1	1	1	4,937 (04)	1	1	1	3,719 (04)	1	1	1	70	0.57	0.29	0.26	0.21	0.16	136,000	92%	
60 ⁴	7,932 (06)	2	2	2	5,874 (06)	1	2	1	7,310 (06)	2	2	2	5,506 (06)	1	2	1	102	0.87	0.44	0.39	0.30	0.22	129,000		
80 ⁴	10,575 (08)	2	2	2	7,956 (08)	1	2	2	9,747 (08)	2	2	2	7,342 (08)	1	2	2	133	1.14	0.56	0.49	0.39	0.29	129,000		
100 ⁴	13,166 (10)	3	3	3	9,932 (10)	1	3	2	12,153 (10)	3	3	3	9,154 (10)	1	3	2	172	1.47	0.75	0.67	0.51	0.38	128,000		
120 ⁴	15,823 (12)	3	3	3	11,919 (12)	2	3	2	14,583 (12)	3	3	3	10,985 (12)	1	3	2	204	1.76	0.88	0.78	0.60	0.44	128,000		
700mA Fixture Operating at 25° C (77° F)																									
40 ⁴	6,543 (04)	2	2	2	4,900 (04)	1	2	1	6,030 (04)	2	2	2	4,516 (04)	1	1	1	93	0.79	0.40	0.35	0.27	0.20	111,000	90%	
60 ⁴	9,688 (06)	2	2	2	7,255 (06)	1	2	2	8,929 (06)	2	2	2	6,686 (06)	1	2	1	137	1.18	0.59	0.51	0.39	0.29	111,000		

* For recommended lumen maintenance factor data see TD-13

** For more information on the IES BUG (Backlight-Uplight-Glare) Rating visit www.iesna.org/PDF/Erratas/TM-15-07BugRatingsAddendum.pdf



Submitted by Vanguard Lighting



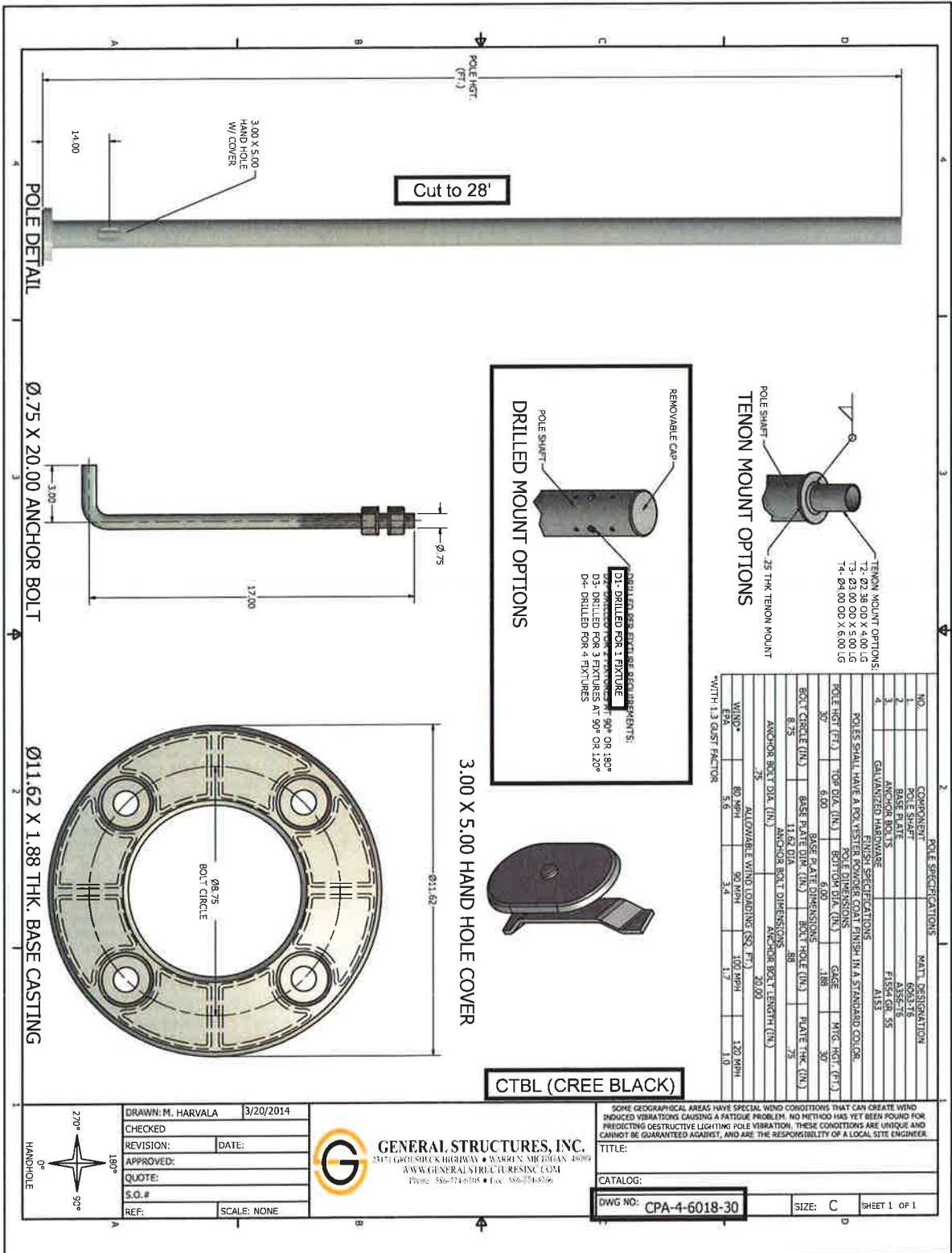
Job Name:
 GUILFORD HIGH SCHOOL
 Architect: TAI SOO KIM ASSOCIATES
 (HARTFORD)
 Engineer: KOHLER RONAN (DANBURY)

Catalog Number:
 CPA-4-6018-28-D1-CTBL

Notes:

Type:
FF-28

V14-42936



DRAWN: M. HARVALA 3/20/2014

CHECKED: _____ DATE: _____

REVISION: _____

APPROVED: _____

QUOTE: _____

S.O.# _____

REF: _____ SCALE: NONE

GENERAL STRUCTURES, INC.
 5171 GARDNER HIGHWAY • WARREN, MICHIGAN 48093
 WWW.GENERALSTRUCTURESINC.COM
 Phone: 586-734-6338 • Fax: 586-734-6336

SOME GEOGRAPHICAL AREAS HAVE SPECIAL WIND CONDITIONS THAT CAN CREATE WIND INDUCED VIBRATIONS CAUSING A FATIGUE PROBLEM. NO METHOD HAS YET BEEN FOUND FOR PREDICTING DESTRUCTIVE LIGHTING POLE VIBRATION. THESE CONDITIONS ARE UNIQUE AND CANNOT BE GUARANTEED AGAINST, AND ARE THE RESPONSIBILITY OF A LOCAL SITE ENGINEER.

TITLE: _____

CATALOG: _____

DWG NO: **CPA-4-6018-30** SIZE: C SHEET 1 OF 1

Submitted by Vanguard Lighting



Job Name:
GUILFORD HIGH SCHOOL
Architect: TAI SOO KIM ASSOCIATES
(HARTFORD)
Engineer: KOHLER RONAN (DANBURY)

Catalog Number:
ARE-EDR-2M-R3-04-E-UL-BK-700-40K
Notes:

Type:
FF-16

V14-42936

16' MH

ARE-EDR-2M-R3

Cree Edge™ Round Area Luminaire - Type II Medium - Spider Mount, Center Tenon

Product Description

Slim, low profile design minimizes wind load requirements. Luminaire sides are rugged cast aluminum with integral, weathertight LED driver compartments, spun vented cover and high performance aluminum heat sinks. Post top mounting consists of four precision machined, extruded aluminum arms mounted to weathertight cast lower hub with center tenon adaptor and is designed to slip-fit over a 2.375" (60mm) IP to 3" (76mm) O.D. steel or aluminum tenon or pole and secures to tenon with four set screws.

Performance Summary

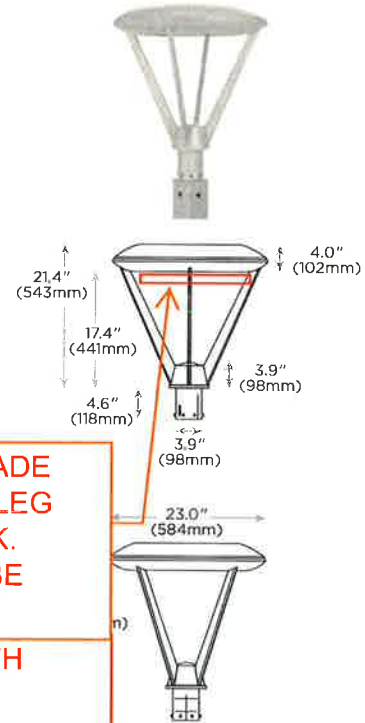
- Utilizes BetaLED® Technology
- Patented NanoOptic® Product Technology
- Made in the U.S.A, of U.S. and imported parts
- CRI: Minimum 70 CRI
- CCT: 5700K (+ / - 500K) Standard, 4000K (+ / - 300K)
- Limited Warranty*: 10 years on luminaire / 10 years on Colorfast DeltaGuard® finish
- EPA and Weight: Reference EPA and Weight spec sheet

Accessories

XA-BRDSPK
Bird Spikes

ROLLED ALUMINUM COLLAR SHIELD, MADE FROM 1.5" DEEP X 3/4" X 1/8" UNEQUAL LEG ANGLE, POWDERCOATED MATTE BLACK. SHIELD DETAILS AND DIMENSIONS TO BE CONFIRMED USING SAMPLE FIXTURE.

EXISTING FIXTURE TO REMAIN, WITH ADDED SHEET METAL COLLAR TO CONTROL GLARE FOR NEIGHBORS.



Ordering Information

Example: ARE-EDR-2M-R3-04-E-UL-SV-350-OPTIONS

ARE-EDR	2M	R3	LED Count (x10)	Series	Voltage	Color Options	Drive Current	Options
ARE-EDR	2M Type II Medium	R3 Spider Mount, Center Tenon	04* 06 08* 10* 12	E	UL Universal 120-277V UR Universal 347-480V 34 347V 12 120V 27 277V	SV Silver (Standard) BK Black BR Bronze PB Platinum Bronze WH White	350** 350mA 525 525mA 700*** 700mA	40K 4000K Color Temperature - Color temperature per luminaire Dim 0-10V Dimming - Control by others - Refer to dimming spec sheet for details - Can't exceed specified drive current F Fuse - Not available with all ML options. Refer to ML spec sheet for availability with ML options - Not available with UH or 34 voltages HL Hi / Low (175 / 350 / 525 Dual Circuit Input) - Refer to ML spec sheet for details - Sensor not included P Photocell - Not available with all ML options. Refer to ML spec sheet for availability with ML options - Must specify voltage other than UH TL Two-Level (175 / 525 w/ Integrated Sensor Control)™ - Refer to ML spec sheet for details TL2 Two-Level (0 / 350 w/ Integrated Sensor Control)™ - Refer to ML spec sheet for details TL3 Two-Level (0 / 525 w/ Integrated Sensor Control)™ - Refer to ML spec sheet for details

* See www.cree.com/lighting/products/warranty for warranty terms.
 † Consists of multiple 20 LED light bars. 40, 60, 80, and 100 LED units use blanks as needed in place of populated light bars
 ** Available on luminaires with 60-120 LEDs
 *** Available on luminaires with 40-60 LEDs
 **** Must specify voltage other than UH, UL or 34



Rev. Date: 09/27/13



Submitted by Vanguard Lighting



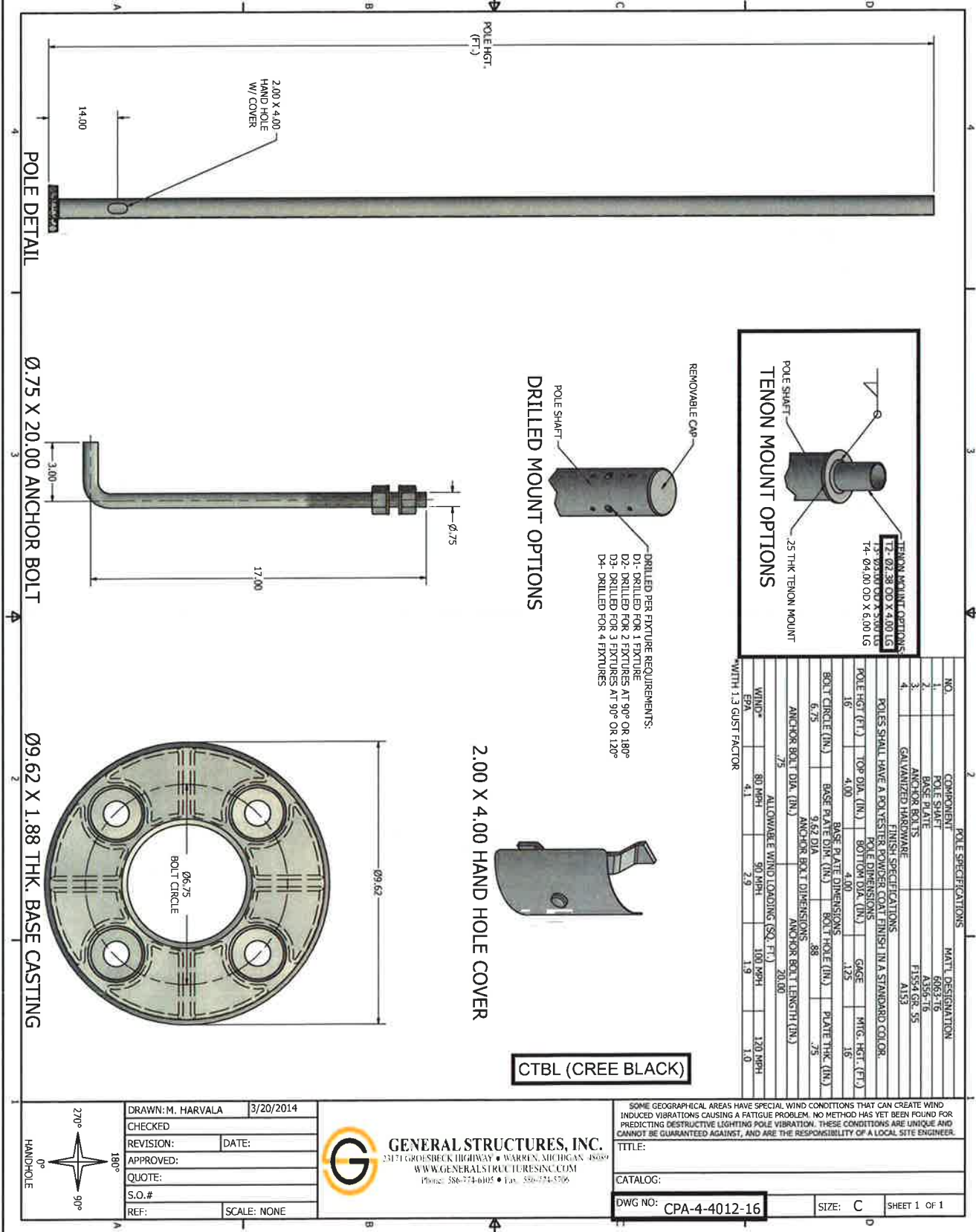
Job Name:
GUILFORD HIGH SCHOOL
Architect: TAI SOO KIM ASSOCIATES
(HARTFORD)
Engineer: KOHLER RONAN (DANBURY)

Catalog Number:
CPA-4-4012-16-T2-CTBL

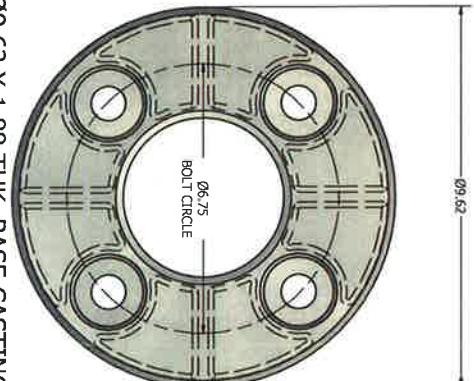
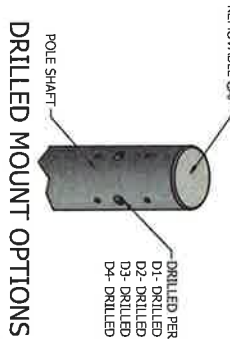
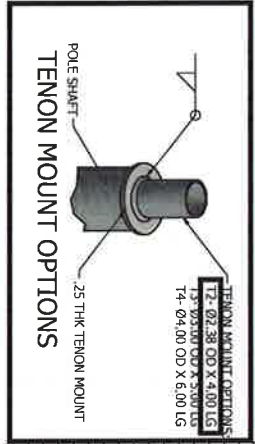
Notes:

Type:
FF-16

V14-42936



POLE SPECIFICATIONS		MATERIAL DESIGNATION	
NO.	COMPONENT		
1	POLE SHAFT	6062-T6	
2	BASE PLATE	A356-T6	
3	ANCHOR BOLTS	F1554-GR. 9S	
4	GALVANIZED HARDWARE	A153	
FINISH SPECIFICATIONS			
POLES SHALL HAVE A POLYESTER POWDER COAT FINISH IN A STANDARD COLOR.			
POLE DIMENSIONS			
POLE HEIGHT (FT.)	TOP DIA. (IN.)	GAGE	MFG. HOI. (FT.)
16	4.00	1.25	16
BASE PLATE DIMENSIONS			
BOLT CIRCLE (IN.)	BASE PLATE DIA. (IN.)	ROTT HOLE (IN.)	PLATE THK. (IN.)
6.75	9.62 DIA	.88	.75
ANCHOR BOLT DIMENSIONS			
ANCHOR BOLT DIA. (IN.)		ANCHOR BOLT LENGTH (IN.)	
.75		20.00	
ALLOWABLE WIND LOADING (SQ. FT.)			
WIND*	80 MPH	100 MPH	120 MPH
EPA	4.1	2.9	1.9
WIDTH 1.3 GUST FACTOR			



DRAWN: M. HARVALA 3/20/2014
 CHECKED
 REVISION: DATE:
 APPROVED:
 QUOTE:
 S.O.#
 REF: SCALE: NONE

GENERAL STRUCTURES, INC.
 23171 GROESBECK HIGHWAY • WARREN, MICHIGAN 48099
 WWW.GENERALSTRUCTURESINC.COM
 Phone: 586-774-6105 • Fax: 586-774-5706

SOME GEOGRAPHICAL AREAS HAVE SPECIAL WIND CONDITIONS THAT CAN CREATE WIND INDUCED VIBRATIONS CAUSING A FATIGUE PROBLEM. NO METHOD HAS YET BEEN FOUND FOR PREDICTING DESTRUCTIVE LIGHTING POLE VIBRATION. THESE CONDITIONS ARE UNIQUE AND CANNOT BE GUARANTEED AGAINST, AND ARE THE RESPONSIBILITY OF A LOCAL SITE ENGINEER.
 TITLE:
 CATALOG:
 DWG NO: CPA-4-4012-16 SIZE: C SHEET 1 OF 1

IP65 : Suitable for Wet Locations
 IK10 : Impact Resistant (Vandal Resistant)



UTA-31821

Tango round wall down light LED

Wall luminaires with a variety of reflectors and lamps with up and downward light distributions. Designed to illuminate the wall surface and for light accents on vertical surfaces.

Low copper content die-cast aluminum housing and aluminum frame with integral anti-glare baffles. Stainless steel screws. Durable silicone rubber gasket and clear toughened glass. Single cable entry. Housing is treated with a chemical chromated protection before powder coating, ensuring high corrosion resistance. Integral electronic control gear. Anodized high purity aluminum reflector.

For horizontally mounted single lamp configurations a one piece multi directional anodized high purity aluminum reflector is used for up and down light distribution. Two lamp configurations use individual reflectors for up and down light distributions. Mounting plate for 3" and 4" junction box is provided with the fixture.

Physical Data

Length: 11.26"
 Height: 10.79"
 Weight: 9.7 lbs

Lamp

40w - 2750lm - White - LED ☉

Beam Angle (Please Specify)

- N - Narrow Beam: 14 Deg
- M - Medium Beam: 25 Deg
- W - Wide Beam : 40 Deg

LED Color (Please Specify)

- W27 - 2700K
- W30 - 3000K
- W40 - 4000K

Voltage (Please Specify)

- 120V
- 277V
- Other _____

Options (Please Specify)

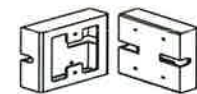
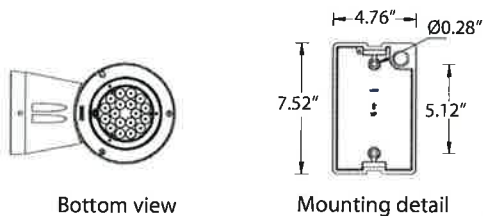
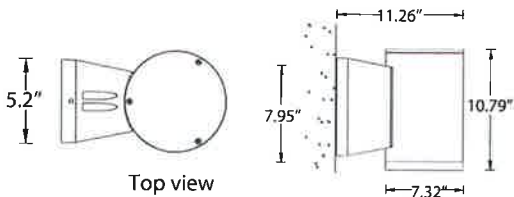
- F - Frosted Lens
- C - Clear Lens

Color (Please Specify)

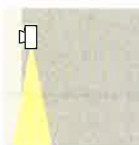
- 01-Black - RAL 9011
- 02- Dark Grey - RAL 7043
- 03-White - RAL 9003
- 04 - Metallic Silver - RAL 9006
- 05-Matt Silver - RAL 9006
- 06-Bronze - RAL 6014
- 07- Custom - RAL _____



**GUILFORD TYPE SW1
 DIRECT FORWARD THROW LED
 CAN 2700K FORWARD THROW
 DOWN METALLIC SILVER**



- SCE - Surface Conduit Entry Box - 1/2" Conduit 3/4" Conduit
- HGT- Specify Custom Height _____ ft



Standard Distribution



Ordering Example : UTA - 31821 - White-40w - N - W30 - 120v - Options

PROJECT: _____ DATE: _____

TYPE: _____ QUANTITY: _____ NOTE: _____

Ligman Lighting USA reserves the right to change specifications without prior notice, please contact factory for latest information.
 Due to the continual improvements in LED technology data and components may change without notice.

IP65 : Suitable for Wet Locations
 IK10 : Impact Resistant (Vandal Resistant)



UTA-31831

Tango round wall up-down light LED

Wall luminaires with a variety of reflectors and lamps with up and downward light distributions. Designed to illuminate the wall surface and for light accents on vertical surfaces.

Low copper content die-cast aluminum housing and aluminum frame with integral anti-glare baffles. Stainless steel screws. Durable silicone rubber gasket and clear toughened glass. Single cable entry. Housing is treated with a chemical chromated protection before powder coating, ensuring high corrosion resistance. Integral electronic control gear. Anodized high purity aluminum reflector.

For horizontally mounted single lamp configurations a one piece multi directional anodized high purity aluminum reflector is used for up and down light distribution. Two lamp configurations use individual reflectors for up and down light distributions. Mounting plate for 3" and 4" junction box is provided with the fixture.

Physical Data

Length: 11.26"
 Height: 11.34"
 Weight: 14.1 lbs

Lamp

2x40w - 2x2750lm - White - LED

Beam Angle (Please Specify)

N - Narrow Beam: 14 Deg
 M - Medium Beam: 25 Deg
 W - Wide Beam : 40 Deg

LED Color (Please Specify)

W27 - 2700K
 W30 - 3000K
 W40 - 4000K

Voltage (Please Specify)

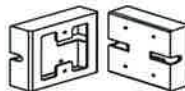
120V
 277V

Options (Please Specify)

F - Frosted Lens
 C - Clear Lens

Color (Please Specify)

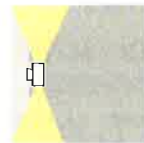
01-Black - RAL 9011
 02- Dark Grey - RAL 7043
 03-White - RAL 9003
 04 - Metallic Silver - RAL 9006
 05-Matt Silver - RAL 9006
 06-Bronze - RAL 6014
 07- Custom - RAL _____



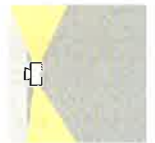
SCE - Surface Conduit Entry Box - 1/2" Conduit 3/4" Conduit

HGT- Specify Custom Height _____ ft

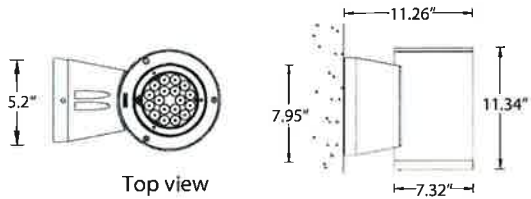
FWD- Forward Throw Down 10° Tilt



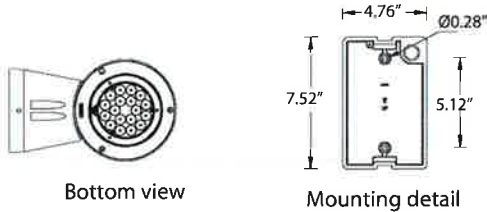
Standard Distribution



Forward Throw Down 10° Tilt

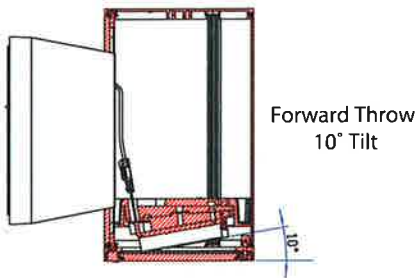


Top view



Bottom view

Mounting detail



Forward Throw
10° Tilt



Ordering Example : UTA - 31831 - White-80w - N - W30 - 120v - Options



Rev: 11/13

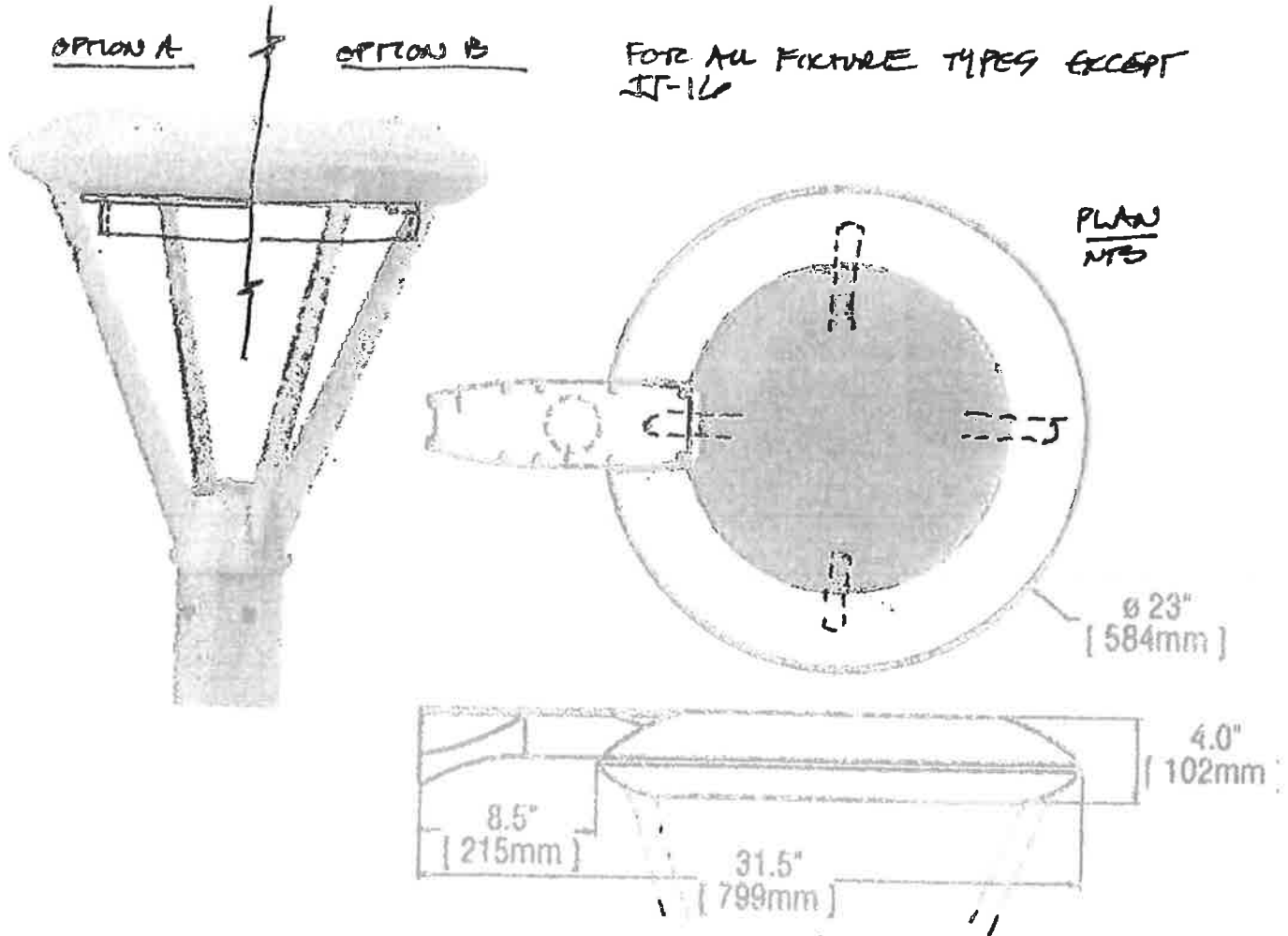
PROJECT: _____ DATE: _____

TYPE: _____ QUANTITY: _____ NOTE: _____

Ligman Lighting USA reserves the right to change specifications without prior notice, please contact factory for latest information. Due to the continual improvements in LED technology data and components may change without notice.



CONCEPT SKETCH FOR PRICING ONLY



FOR ALL FIXTURE TYPES EXCEPT
IF-16

PLAN
NTS

Ø 23"
[584mm]

4.0"
[102mm]

8.5"
[215mm]

31.5"
[799mm]

SEE PLANS FOR QUANTITIES
+ TYPES

4 HOLES @ 90° FOR 1/4" x 20 SS x 3/8"
SELF TAP SCREWS
SCREWS BY OTHERS

1/2" x 3/4" UNEQUAL LEG ALUM &
POWDERCOATED MATTE BLACK
ROLLED INTO CIRCLE

MUST CLEAR SPIDER LEGS +
NOT INTERFERE w/ DOOR
OF FIXTURE

BUT SPACE w/ BACKUP PLATE
POP RIVET

SHIELD MAY BE ATTACHED TO BODY
OF FIXTURE OR DOOR - COORDINATE
w/ ANY INTERIOR CONFLICTS. IF ON
DOOR MUST NOT INTERFERE w/ DOOR SWING

OPTION A
OUTSIDE
FLANGE

OPTION B
INSIDE
FLANGE

LEGS OVER
LEDS.

3 1/2" ±

RCP
NTS